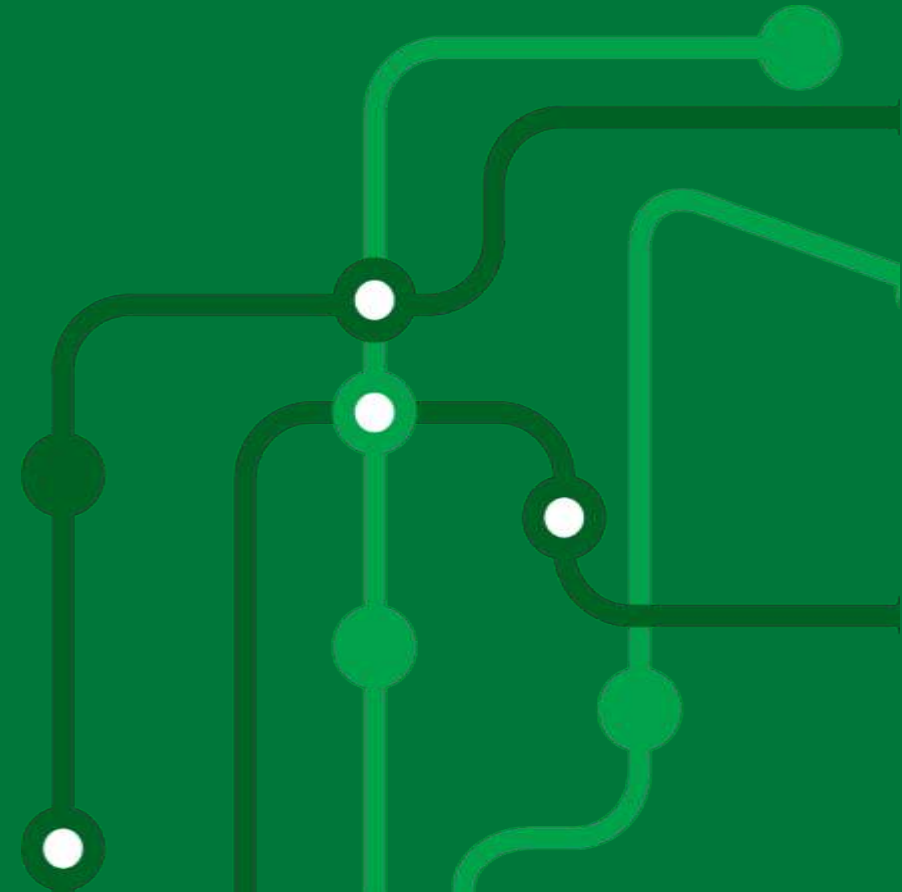


Transport **North East**

Transport update from the North East July 2023

Moving to a green, healthy, dynamic and thriving North East.





NORTH EAST ENGLAND



This year we will be...

- Preparing for devolution
- Modernising Metro
- Making buses better
- Building the Northumberland Line
- Developing the Washington Metro Loop business case



Devolution

- A new North East Mayoral Combined Authority will be created in May 2024, backed by a £4.2bn devolution deal.
- This year we are preparing for devolution, including:
 - preparing a **refreshed Transport Plan** and some associated new strategies.
 - developing our application for a **City Region Sustainable Transport Settlement (CRSTS)** of £567m.
 - initiating a **Bus Reform Project** to consider different options for the delivery of bus services in the future.
 - developing the business case for the **Washington Metro Loop** and feasibility studies for other **Metro extensions**.



Stronger Transport Governance

- A single Mayoral Combined Authority covering the LA7 with a collaborative 'Mayor-and-Cabinet' model. The first mayoral election will take place in May 2024.
- This will build on the strong and successful collaborative working model built up through the North East Joint Transport Committee.
- Transport powers will be transferred to the MCA from NECA/North of Tyne CA and the Joint Transport Committee, which will fall away.
- Nexus's role as Passenger Transport Executive for Tyne and Wear will continue, as will its position as an executive body and officer of the MCA.
- Ownership of the Tyne Tunnels will also transfer to the MCA.

Devolved transport funding

- A City Region Sustainable Transport Settlement (CRSTS) comprising:
 - **£563m capital** funding, of which **£147m** is wholly new money
 - **£11.4m** revenue funding for scheme preparation and capacity-building
- Also
 - Metro capital and revenue funding support
 - Bus Service Improvement Plan funding of **£163.5m**



Refreshed Transport Plan

- The NE adopted a new **Transport Plan** in March 2021 which **sets the strategic framework** in which the transport elements of the devolution deal have been negotiated.
- This will be **reviewed and refreshed**, following new government guidance, by March 2024, and finalised by the mayor and combined authority once it is established.



Metro and Rail

- Metro is locally owned and operated, underpins the local economy and is a major employer.
- Nexus is introducing a brand **new Metro fleet** over the next three years, and increasing system frequency and capacity.
- We are also delivering the **NE Rail and Metro Strategy** covering:
 - Enlargement of our Metro and local rail network, bringing better connections to more communities – including a campaign to reopen the **Leamside Line** and deliver the **Washington Metro Loop**.
 - The need for investment in key rail infrastructure, especially the **capacity of the East Coast Main Line**.
 - Integration of ticketing, fares and connections.
 - Improved services through partnership with Great British Railways.
 - The need to maintain the Metro asset over the long-term.



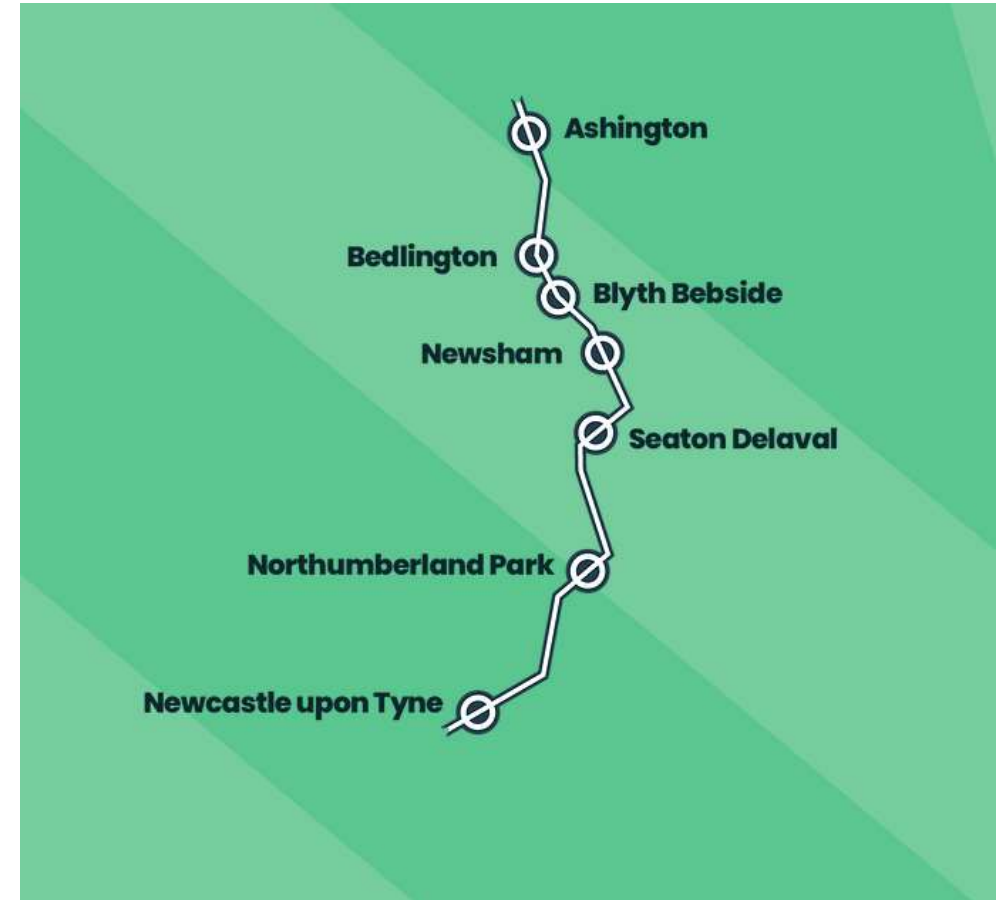
Buses

- We have created a new **Enhanced Partnership** with local operators focused on improving bus services and grow ridership.
- We are delivering our **Bus Service Improvement Plan** using **£163.5m** government funding to lower fares, grow networks and speed buses up over the next three years.
- This includes a **new young persons £1 single bus fare** – meaning affordable travel on any bus service for those **aged 21 and under across Tyne and Wear, Northumberland and Durham**. The offer is matched on Metro and Shields Ferry.
- We will shortly launch a region-wide free travel pass for care-experienced people up to the age of 25 and region-wide day ticket caps.
- The devolution deal gives access to bus franchising powers, so we have started a Bus Reform Project to review the options.



Northumberland Line

- The Northumberland Line will bring **passenger trains back into service** between Ashington and Newcastle by Summer 2024.
- It will provide **six new stations** at Ashington, Blyth Bebside, Bedlington, Newsham, Seaton Delaval and Northumberland Park, with journeys between Newcastle and Ashington taking around 35 minutes.
- The station at Northumberland Park will be adjacent to the existing Tyne and Wear Metro station, bringing further opportunities for interchange and travel to other destinations via Metro.
- We will also integrate ticketing with the Metro via the Nexus 'Pop' brand.



Washington Metro Loop

Reduce emissions by
87,000
 tonnes **CO₂**
 per year



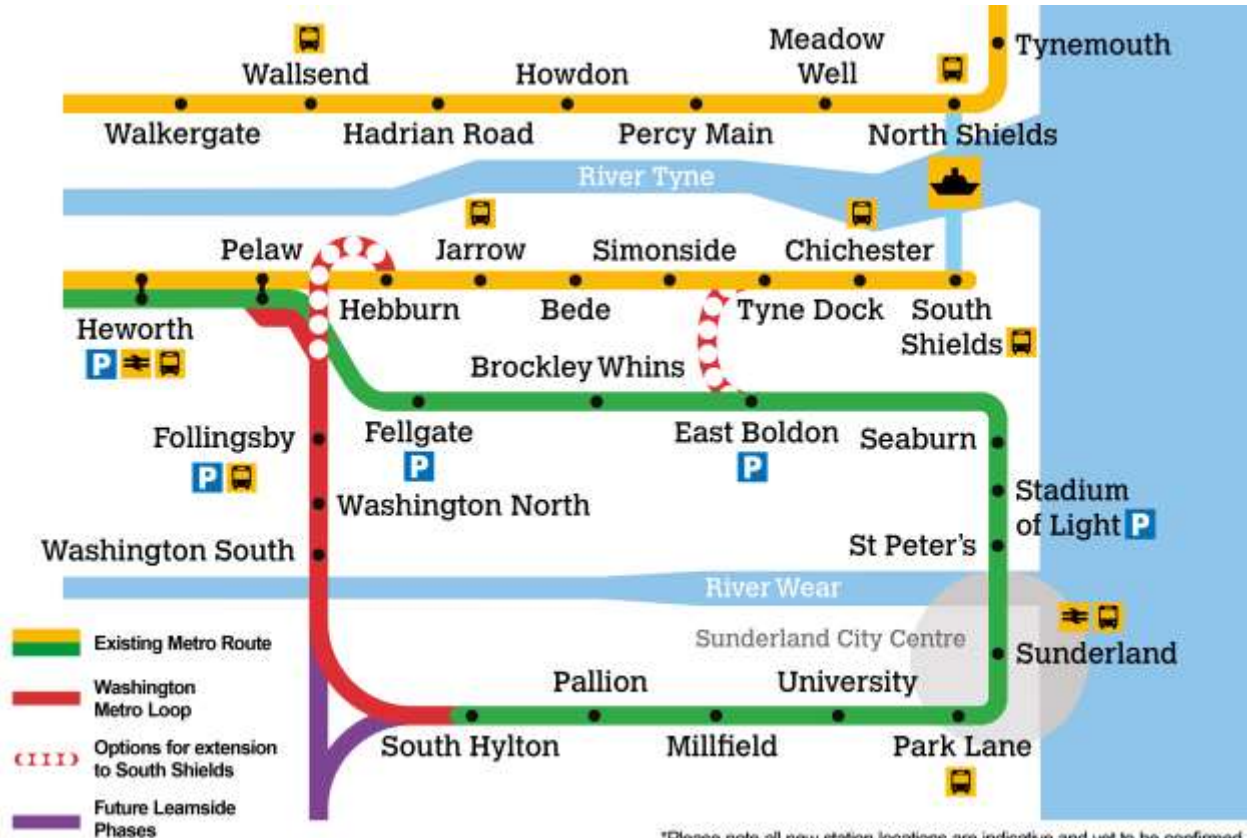
Each Metro journey generates
£11.80
 for the regional economy

Create nearly
8 million
 additional passenger
 journeys



generate over
£90m
 /year

in economic benefits to the region



*Please note all new station locations are indicative and yet to be confirmed.

Roads

- We are developing a new **Key Route Network (KRN)** and a strategy for its development.
- We are building a partnership with **National Highways** to develop the national network in our region especially A19 junctions, A1 dualling and A69 upgrades.
- We are delivering a region-wide network of **Electric Vehicle charge-points** and preparing a new EV Charging Strategy.



Active Travel

- We are implementing a step-change in **high-quality active travel provision** by prioritising investment in the cycling and walking networks identified through Local Cycling and Walking Infrastructure Plans (LCWIPs).
- We have secured funding through the Active Travel Fund and we are building a partnership with **Active Travel England**.
- The new Mayor will have the option to appoint an Active Travel Commissioner.
- We will build a sequenced pipeline of active travel infrastructure schemes to connect the region and to integrate with other forms of transport.



Institute of Future Mobility

- Bringing North East universities and colleges together with the region's transport operations and supply sector.
- To exploit physical and digital assets for innovation and Research and Development.
- Will help the North East to be seen as a candidate for tests, trials and pilot schemes of future transport technologies.



